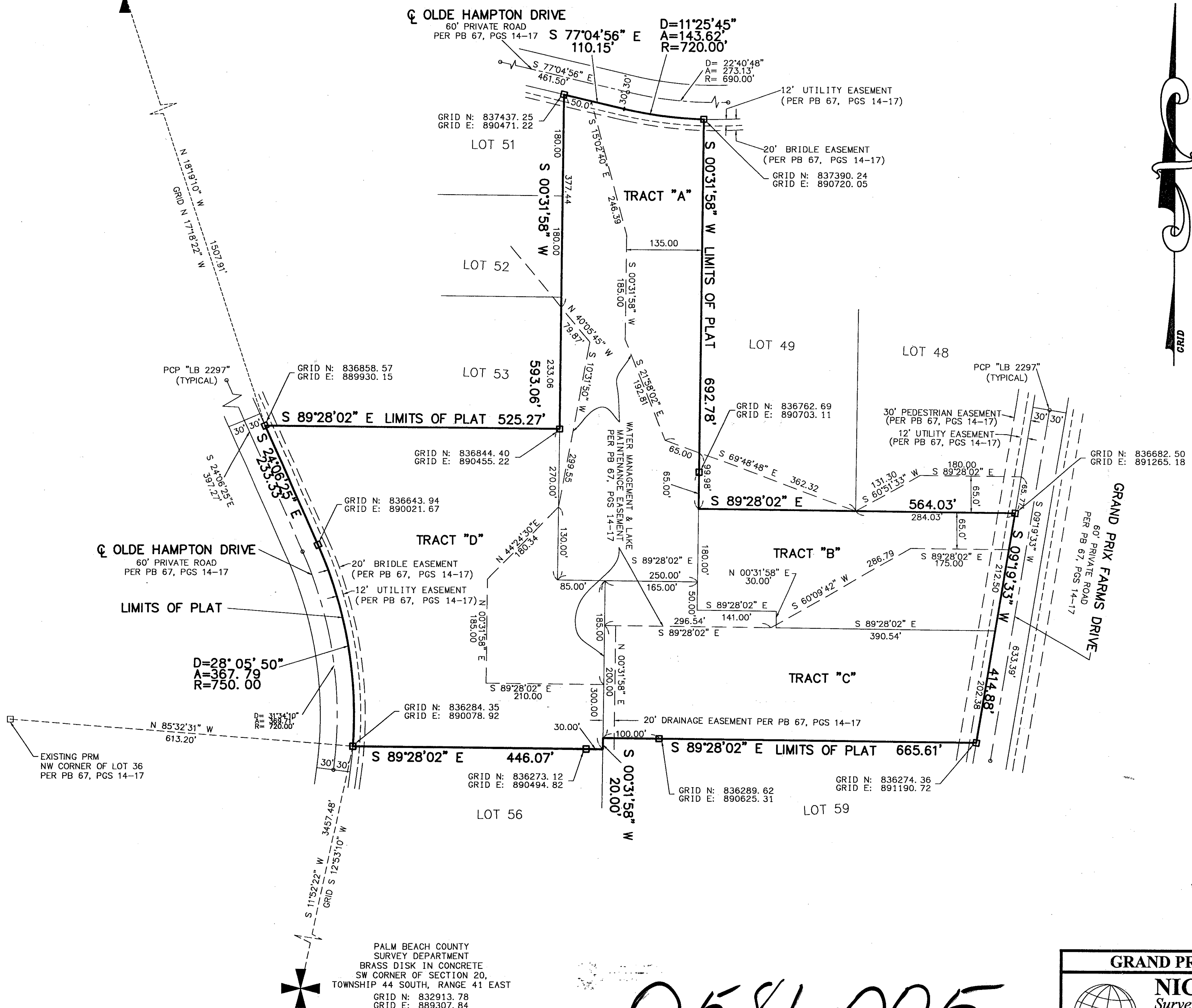


GRAND PRIX FARMS, PLAT NO. 1, P.R.D., REPLAT NO. 3
BEING A REPLAT OF LOTS 50, 54, 55, 57, AND 58, GRAND PRIX FARMS, PLAT NO. 1, P.R.D.,
AS RECORDED IN PLAT BOOK 67, PAGES 14 THROUGH 17
OF THE PUBLIC RECORDS OF PALM BEACH COUNTY, FLORIDA
LYING IN THE WEST ONE HALF OF SECTION 20, TOWNSHIP 44 SOUTH, RANGE 41 EAST,
VILLAGE OF WELLINGTON, FLORIDA
SHEET 2 OF 2 SHEETS
SEPTEMBER 1997

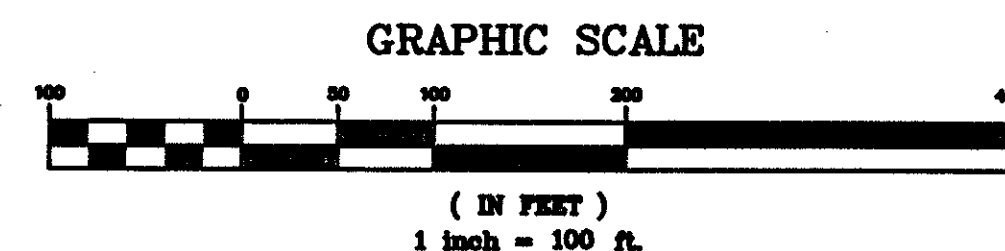
PALM BEACH COUNTY
SURVEY DEPARTMENT
BRASS DISK IN CONCRETE
NW CORNER OF SECTION 20,
TOWNSHIP 44 SOUTH, RANGE 41 EAST
GRID N: 838298.22
GRID E: 889481.58



PER-89-124
5/2/4/G

VILLAGE OF
WELLINGTON
14000 GREENBRIAR BLVD.
WELLINGTON, FLORIDA 33414
(561) 791-4000

- LEGEND:**
- ◻ = PERMANENT REFERENCE MONUMENT "P.L.S. 4828" (UNLESS OTHERWISE NOTED)
 - R = RADIUS
 - D = ARC LENGTH
 - Δ = DELTA (CENTRAL ANGLE)
 - PB = PLAT BOOK
 - PGS = PAGES
 - PSM = PROFESSIONAL SURVEYOR & MAPPER
 - PLS = PROFESSIONAL LAND SURVEYOR
 - UE = UTILITY EASEMENT
 - DE = DRAINAGE EASEMENT
 - EXISTING PRM = FOUND PERMANENT REFERENCE MONUMENT "PRM 2297"
 - GRID N = GRID NORTHING
 - GRID E = GRID EASTING
 - (C) = CALCULATED
 - (R) = RADIAL



82/176

GRAND PRIX FARMS, PLAT NO. 1, P.R.D., REPLAT NO. 3



NICK MILLER, INC.
Surveying & Mapping Consultants
SUITE 105
2560 RCA BLVD.
PALM BEACH GARDENS, FLORIDA 33410
TEL 561 627-5200 FAX 561 627-0983
D.B.P.R. LICENSED BUSINESS No. 4318

SHEET NO.
2 OF 2

SCALE: 1" = 100'
DATE: SEPT. 1997
JOB NO. 97006B
FILE: 97006B2.DWG

0581-005

PALM BEACH COUNTY
SURVEY DEPARTMENT
BRASS DISK IN CONCRETE
SW CORNER OF SECTION 20,
TOWNSHIP 44 SOUTH, RANGE 41 EAST
GRID N: 832913.78
GRID E: 889307.84

SUBDIVISION * Grand Prix Farms
BOOK 82 PAGE 176
FLOOD ZONE A-0 FLOOD MAP # 1006
QUAD # 78 ZONING RE
SE 76-60 ZIP CODE 33414
PUD NAME Grand Prix Farms

TAE
999